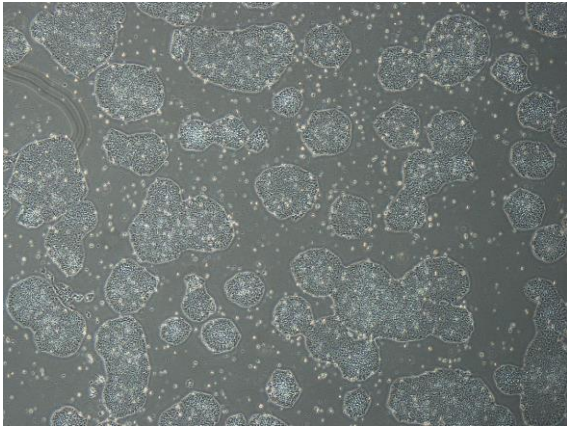
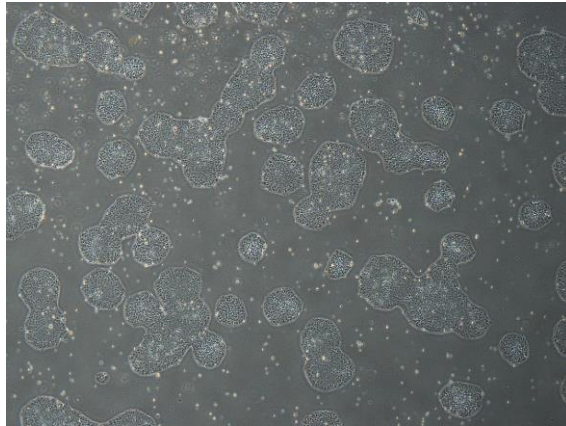


## 【 CiRA-j-1609 】 Morphology of iPSC colonies

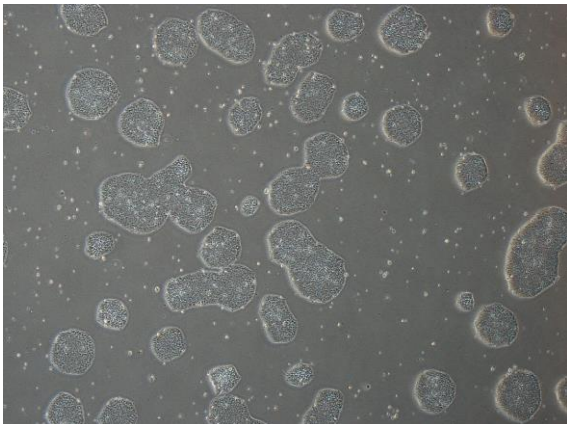
CiRA-j-1609-A: passage-3



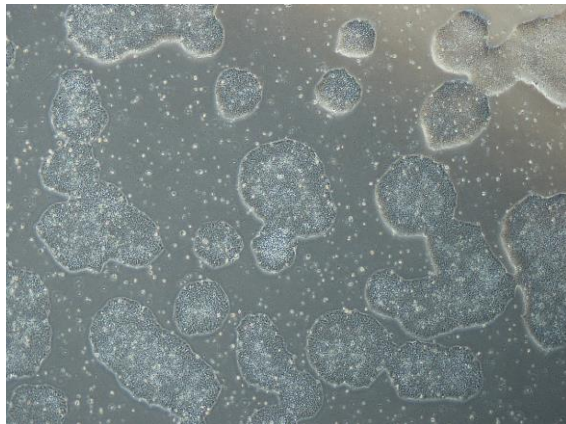
CiRA-j-1609-B: passage-3



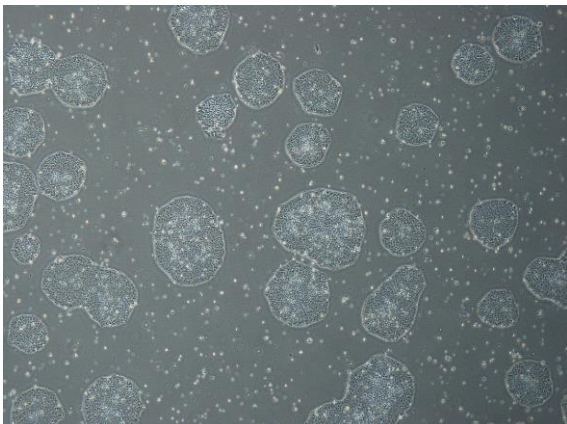
CiRA-j-1609-C: passage-3



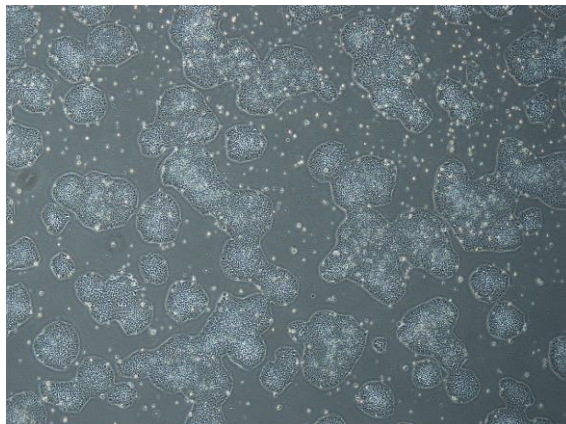
CiRA-j-1609-D: passage-3



CiRA-j-1609-E: passage-3



CiRA-j-1609-F: passage-3



( All images were captured at 4x magnification )